

ECO-S



CHEVILLE D'ISOLATION ECO S
ECO-S INSULATION PLUG



NEW! eco-drive S

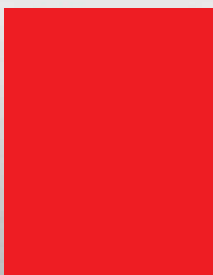
INNOVATIVE SCREWED-IN ANCHOR
WITH METAL PIN,
COUNTERSUNK INSTALLATION
ø8mm



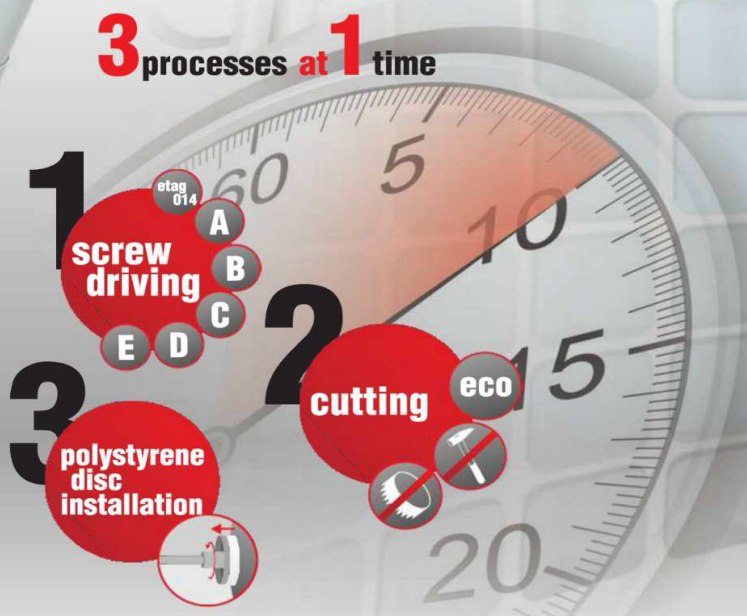
ETA-13/0107

ETAG 014

A B C D E



3 processes at 1 time



installation:
quick & easy
even less
than 10 secs

* ETAG 014: A B C D

Caractéristiques/Specifications/ Spezifikationen

MATERIAUX SUPPORT



béton non-fissuré hourdis pierre naturelle brique pleine brique creuse silico-calcaire silico-calcaire solide béton léger creuse béton cellulaire

NEW!



ETAG 014
A B C D E

quick drill
35mm

telescopic
design

strong
plus



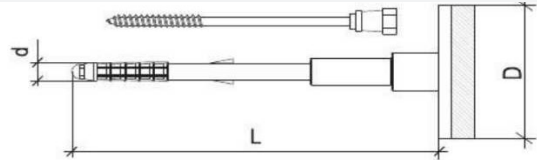
thermal
pro

Thermal conductivity of
ONLY 0.002 [W/K]!!

TECHNICAL DATA

Drilled hole diameter	8 mm
Anchorage depth	35 mm* / 55 mm**
Drilled hole depth	45 mm* / 65 mm**
Washer diameter	60 mm
Washer stiffness	0.6 [kN/mm]
European Technical Approval	ETA-13/0107
Plug Material	PA6
Pin type	galvanized zinc plated steel with head coated with PA6+GF

* - etag 014 use category A B C D
** - etag 014 use category E

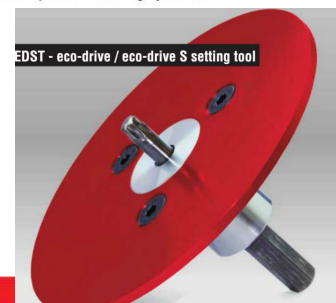


PRODUCT RANGE

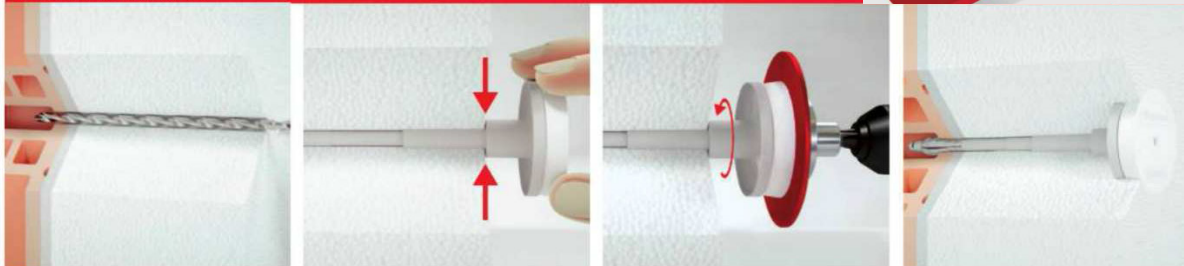
Code	Diameter & length of the plug d x L [mm]	Insulation material thickness BUILDING	
		NEW*	OLD**
ECODRIVE-S-08150	8 x 150	80 / 60	60
ECODRIVE-S-08170	8 x 170	100 / 80	80
ECODRIVE-S-08190	8 x 190	120 / 100	100
ECODRIVE-S-08210	8 x 210	140 / 120	120
ECODRIVE-S-08230	8 x 230	160 / 140	140
ECODRIVE-S-08250	8 x 250	180 / 160	160
ECODRIVE-S-08270	8 x 270	200 / 180	180
ECODRIVE-S-08290	8 x 290	220 / 200	200
ECODRIVE-S-08310	8 x 310	240 / 220	220
ECODRIVE-S-08330	8 x 330	260 / 240	240
ECODRIVE-S-08350	8 x 350	280 / 260	260
ECODRIVE-S-08370	8 x 370	300 / 280	280
ECODRIVE-S-08390	8 x 390	320 / 300	300
ECODRIVE-S-08410	8 x 410	340 / 320	320
ECODRIVE-S-08430	8 x 430	360 / 340	340

* - adhesive layer of 10 mm - use category A B C D / E

** - adhesive layer of 10 mm + 20 mm of old plaster - use category A B C D



INSTALLATION METHOD



ECO-S

ALSAFIX
www.alsafix.com

Informations

Produits ALSAFIX associés / ALSAFIX Associated product / ALSAFIX zugehörigen Produkt



EY74A1LS3S



EY78A1LS3S



Sous réserve de modifications. Informations données à titre indicatif. Alsafix ne serait être tenu responsable en cas de mise en oeuvre sans calcul et essais préalables propres à chaque cas.
this document is Subject of modifications. Informations data indicative ALSAFIX not be held liable for any implementation without prior calculation and testing of each case.
Betreff modifications. Informations Daten, ALSAFIX nicht haftbar gemacht werden für die Umsetzung ohne vorherige Berechnung und Prüfung jedes einzelnen Falles werden.

