

REBARTIER

RB401T-E

Code : **RB94005**

■ Tool specifications

| | |
|------------------------------|-------------------------|
| Code | RB94005 |
| Battery | 14.4 V - 4.0 Ah Li-ion |
| Dimensions | 322 / 408 / 1100 mm |
| Weight | 4,60 Kg |
| Recharge time | 45 min (30 min for 90%) |
| Operating temperature | -10°C to 40°C |
| Rebar capacity | 10 x 10 to 20 x 20 mm |
| Max spacing | 40 mm |

■ Application

Ideal for concrete reinforcing bar attachment work. Plumber. Heating engineer. Electrician. Mason. Construction in general. Prefabricated concrete.

Suitable for tying reinforcing bars from Ø10 mm x Ø10 mm up to Ø20 mm x Ø20 mm. Supplied with 2 noses (short and long).

Consumables

TIE WIRE



TW1061T

TW90530 - bright
TW90531 - zinc plated
TW90532 - polyester
TW90536 - stainless



TW90530 = 2 x TW90514

Related products



Battery 14,4V
Li-ion 5 Ah
Code : **PJ99947**



Charger
Code : **RB90246**

More information
on our website:

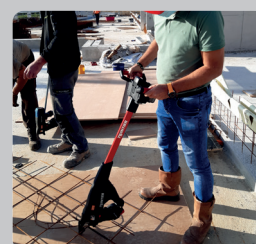
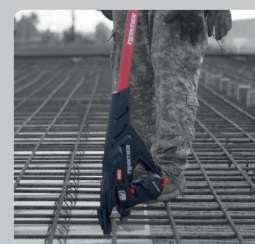
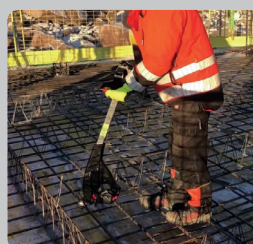




■ Benefits

- Allows for standing work.
 - Double handle without trigger.
 - 0.7 sec / tie.
 - 1 turn / tie, double wire.
 - 95 m / coil.
 - 180 to 240 ties / coils.
 - 4000 ties/battery charge.
 - Reduced wire consumption and superior tightening.
- Delivered in a carrying case with 2 batteries and 1 charger.

Up to 40 mm



Plus d'informations sur
notre site internet :

