

**05/40 P1**

## PNEUMATIC STAPLE GUN

### APPLICATION

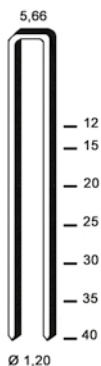
Fixing plasterboard walls, paneling, battens, profiles.  
Furniture industry.  
Fixing car interiors.



code **12S9040**

### TYPE OF NAILS

#### E - EM - ES



**E**  
12 - 40 mm  
Ø 1,20 mm

**EM**  
15 - 40 mm  
Ø 1,00 mm

**ES**  
12 - 40 mm  
Ø 0,9 x 1,2 mm

### TECHNICAL DESCRIPTION

. Code	12S9040
. Trigger actuation	contact
. Dimension (L/W/H)	255 / 67 / 232 mm
. Weight	1,10 Kg
. Magazin capacity	100
. Nails lenght	12 - 40 mm
. Wire diameter	0,9 x 1,2 mm
. Operation pressure	5-8 bars
. Aire consuption	0,80 l

### FEATURES

- . Orientable exhaust

### CONTACT

**ALSAFIX**  
CS 60023 - 114a rue Principale - F-67240 GRIES  
Tel. : +33 3 88 72 42 41 - Fax : +33 3 88 72 17 15  
alsafix@alsafix.com - www.alsafix.com

**ALSAFIX**  
www.alsafix.com