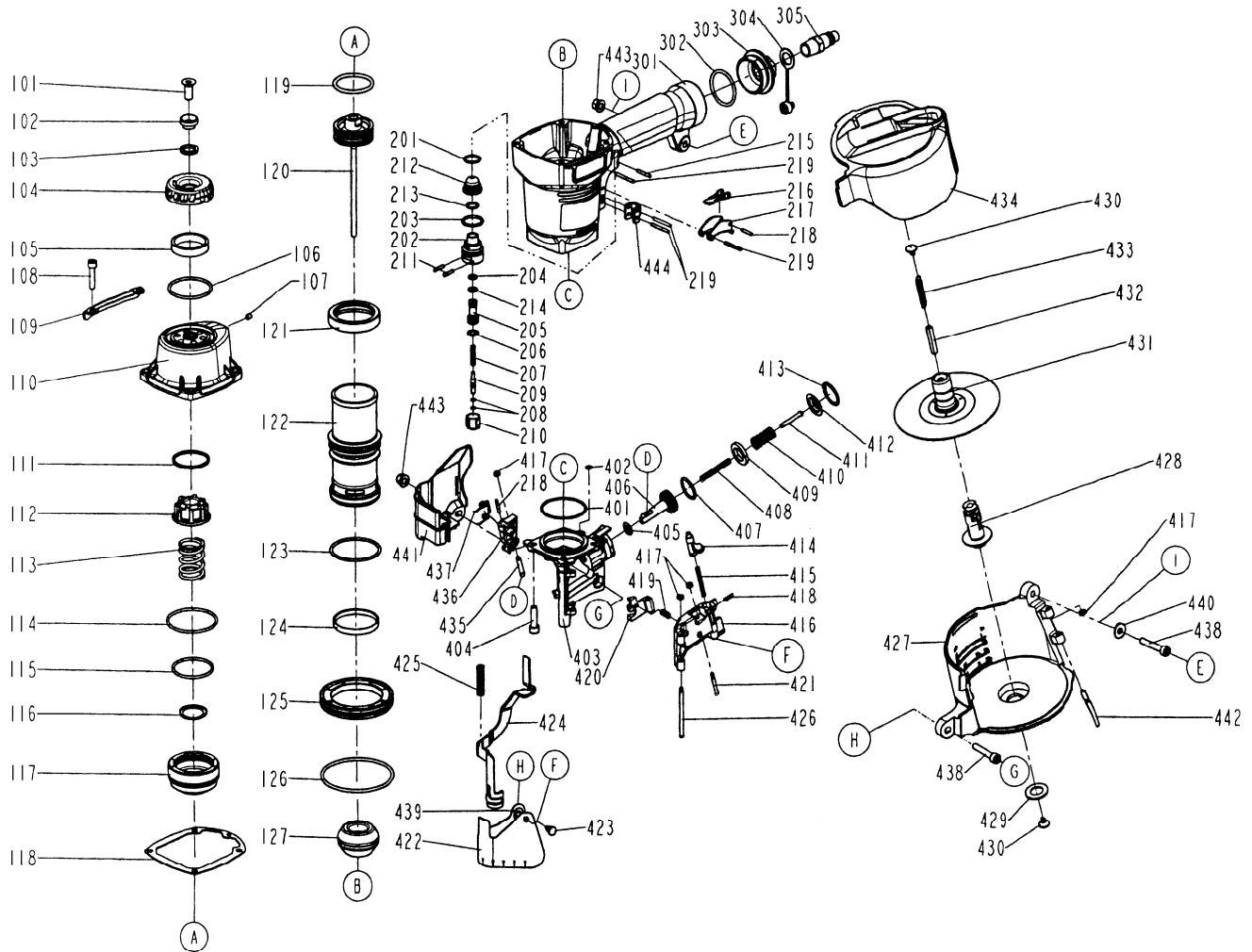


C 23/57



Repère	Code	Français	English	Deutsch	Español	Romana
101	12B00694	Vis	screw	Schraube	Tornillo	Surub
102	12B01868	rondelle	Ring	Scheibe	Arandela	Saiba
103	12B00174	joint	O-ring	O-ring	Junta	Garnitura
104	12B01867	défecteur	deflector	Leitblech	Deflector	Deflector
105	12B00346	silencieux	Silencer	Schalldämpfer	Silenciador	Silentios
106	12B01877	joint	O-ring	O-ring	Junta	Garnitura
107	12B00205	Vis	screw	Schraube	Tornillo	Surub
108	12B01959	Vis	screw	Schraube	Tornillo	Surub
109	12B01871	guide	Driver unit	Führer	Guia	Ghidaj
110	12B01946	tête	Cap	Deckel	Tapa	Capac
111	12B01730	rondelle	Ring	Scheibe	Arandela	Saiba
112	12B01948	joint	O-ring	O-ring	Junta	Garnitura
113	12B01932	ressort	Spring	Feder	Muelle	Arc
114	12B01408	joint	O-ring	O-ring	Junta	Garnitura
115	12B01964	joint	O-ring	O-ring	Junta	Garnitura
116	12B01357	rondelle	Ring	Scheibe	Arandela	Saiba
117	12B01943	Valve de piston	Piston valve	Kolbenventil	Valvula del piston	Valva Pistonului
118	12B01902	Tête de cylindre	Cylinder cap	Zylinderkopf	Culata	Chiulasa
119	12B01962	joint	O-ring	O-ring	Junta	Garnitura
120	12B01900	guide	Driver unit	Führer	Guia	Ghidaj
121	12B01956	Bague	Collar	Ring	Manguito	Inel
122	12B01909	cylindre	cylinder	Zylinder	cilindro	Cilindru
123	12B01408	joint	O-ring	O-ring	Junta	Garnitura
124	12B01911	Joint de retour	O-ring	O-ring	Junta	Garnitura
125	12B01910	bague de cylindre	Cylinderring	Zylinder Ring	Manguito de cilindro	Inel de cilindru
126	12B01963	joint	O-ring	O-ring	Junta	Garnitura
127	12B01912	amortisseur	Bumper	Puffer	amortiguador	Amortizor
201	12B00556	joint	O-ring	O-ring	Junta	Garnitura
202	12B00532	Couvercle	Cover	Deckel	tapadera	Capac
203	12B00213	joint	O-ring	O-ring	Junta	Garnitura

C 23/57

204	12B00212	joint	O-ring	O-ring	Junta	Garnitura
205	12B00502	servo commande	Trigger valve head	Ventil	Cabeza de la valvula	Cap de valva
206	12B00209	joint	O-ring	O-ring	Junta	Garnitura
207	12B00534	ressort	Spring	Feder	Muelle	Arc
208	12B00561	joint	O-ring	O-ring	Junta	Garnitura
209	12B00533	Tige de servo cde	Plunger	Sauger	Ventosa	Ventuza
210	12B00531	servo commande	Trigger valve head	Ventil	Cabeza de la valvula	Cap de valva
211	12B00496	pivot	Pivot	Drehachse	Pivote	Pivot
212	12B00535	couvre servo cmde	Trigger valve cover	Ventilsdeckel	Cabeza de la valvula	Cap de valva
213	12B00557	joint	O-ring	O-ring	Junta	Garnitura
214	12B00565	joint	O-ring	O-ring	Junta	Garnitura
215	12B01876	Goupille	Pin	Stift	Clavija	Zavor
216	12B01907	déclenche gâchette	Secondary trigger	Zweite Ausloser	Parada de secundaria	Opritor secundor
217	12B01906	gâchette	Trigger	Drücker	Gatillo	Opritor
218	12B01105	Goupille	Pin	Stift	Clavija	Zavor
219	12B00552	Goupille	Pin	Stift	Clavija	Zavor
301	12B01901	corps	Body	Gehäuse	Cuerpo	Corp
302	12B01966	joint	O-ring	O-ring	Junta	Garnitura
303	12B01919	Couvercle	Cover	Deckel	tapadera	Capac
304	12B01821	protection plastique	Plastic protection	Kunststoffschrürze	Proteccion plastico	Protectile
305	12B00019	raccord	Air plug	Anschluss	Empalme	Racord
401	12B01965	joint	O-ring	O-ring	Junta	Garnitura
402	12B01878	joint	O-ring	O-ring	Junta	Garnitura
403	12B01950	nez	Nose	Nase	Morro	Nas
404	12B01223	Vis	screw	Schraube	Tornillo	Surub
405	12B00622	joint	O-ring	O-ring	Junta	Garnitura
406	12B01937	Piston	Piston	Kolben	Piston	Piston
407	12B00619	joint	O-ring	O-ring	Junta	Garnitura
408	12B01941	ressort	Spring	Feder	Muelle	Arc
409	12B01922	amortisseur	Bumper	Puffer	amortiguador	Amortizor
410	12B01940	ressort	Spring	Feder	Muelle	Arc
411	12B01955	Baguette	Stick	Zierleiste	Varilla	bagueta
412	12B00600	Couvercle	Cover	Deckel	tapadera	Capac
413	12B00625	amortisseur	Bumper	Puffer	amortiguador	Amortizor
414	12B01845	levier	Lever	Hebel	Palanca	Impagatot
415	12B00334	ressort	Spring	Feder	Muelle	Arc
416	12B01934	porte	Door	Gatter	Puerta	Usa
417	12B00516	anneau	Ring	Scheibe	Arandela	Saiba
418	12B00139	ressort	Spring	Feder	Muelle	Arc
419	12B00501	ressort	Spring	Feder	Muelle	Arc
420	12B01930	arrêt	Shaft	Stoppen	Parada	Opritor
421	12B01931	Goupille	Pin	Stift	Clavija	Zavor
422	12B01952	protection	Protection	Sicherheit	Proteccion	Sigurante
423	12B00504	Goupille	Pin	Stift	Clavija	Zavor
424	12B01915	Sécurité	Safety	Sicherung	Seguridad	Siguranta
425	12B01916	Ressort de sécurité	Safety spring	sicherungsFeder	Muelle de seguridad	Arc de siguranta
426	12B01935	pivot	Pivot	Drehachse	Pivote	Pivot
427	12B01924	magasin	Magazine	Magazin	Almacen	Magazie
428	12B01858	Axe	Axie	Achse	Eje	Axa
429	12B00541	rondelle	Ring	Scheibe	Arandela	Saiba
430	12B00505	socle	rear plate	socket	Zocalò	Bazà
431	12B01928	entretoise	Strut	Abstandshalter	Tirante	Spacer
432	12B00540	entretoise	Strut	Abstandshalter	Tirante	Spacer
433	12B01913	ressort	Spring	Feder	Muelle	Arc
434	12B01926	magasin	Magazine	Magazin	Almacen	Magazie
435	12B00523	Goupille	Pin	Stift	Clavija	Zavor
436	12B01904	Chargeur	Loader	Auflader	Cargador	Incarcator
437	12B00572	Ressort chargeur	Loader spring	Aufladerfeder	Muelle del cargador	Incarcator arc
438	12B01958	Vis	screw	Schraube	Tornillo	Surub
439	12B00517	protection	Protection	Sicherheit	Proteccion	Sigurante
440	12B00564	rondelle	Ring	Scheibe	Arandela	Saiba
441	12B01921	Couvre ressort	Spring cover	Federdeckel	Tapadera de muelle	Capac de Arc
442	12B00605	Goupille	Pin	Stift	Clavija	Zavor
443	12B00567	écrou	Screw nut	Mutter	Tuerca	Piulita
444	12B01918	guide sécurité	Safety guide	Sicherheitfuhung	Guia de seguridad	Guidaj de sigurante